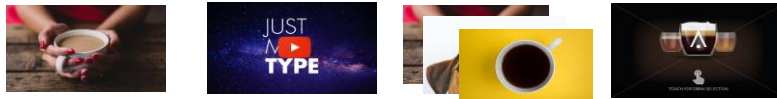


## How to customize your OptiMe

Whether you want to change the appearance of your coffee machine, there are several options.

### A REQUIREMENT FOR FILES



MEDIA	IMAGE	VIDEO PORTRAIT (with sound)	SLIDE SHOW	LOGO ON CUP
Size	800 x 480 px	800 x 480 px	800 x 480 px	120 x 120 px
Data formats	PNG with 24 bit	MPEG-4 Bit rate: max. 500 kbps Image frequency: max. 25 fps	PNG	PNG with 24 bit. Transparent

### B UPLOADING MEDIA

You can upload your media by USB stick or SD-card, see .. [Instruction where to place USB/ SD-Card](#)

Free space for media: 400 MB

The image on the USB stick or SD card must be present in the required folder structure, have the correct data format and the correct size.



### C DELETING MEDIA

Delete media which is no longer required.

IMAGE/VIDEO/SLIDESHOW		LOGO	
Desired action	Screen	Desired action	Screen
1 Go to OPERATOR MENU		Go to OPERATOR MENU	<a href="#">Login with your code</a>
2 Choose SOUND & VISION	1.11	Choose SOUND & VISION	
3 Choose ADVERTISING SCREEN	1.11.00	Choose LOGO ON CUP	1.11.02
4 Choose IMAGE/VIDEO/SLIDESHOW	1.11.00.01/1.11.00.02/1.11.00.03	Choose REMOVE LOGO	1.11.02.03 (logo)
Choose REMOVE IMAGE(S)/VIDEO	1.11.00.01.02 (image)/ 1.11.00.03.05 (slideshow)/ 1.11.00.02.03 (video)	Select files that are no longer required and confirm with OK	
5 Select files that is no longer required and confirm with OK	1.11.00.01.02 (image)/ 1.11.00.03.05 (slideshow)/ 1.11.00.02.03 (video)		
6			

### D CONFIGURING YOUR IMAGE AS SCREENSAVER

You can show your own image as a screensaver

Desired action	Screen	Information
1 Go to OPERATOR MENU		<a href="#">Login with your code</a>
2 Choose SOUND & VISION	1.11	
3 Choose ADVERTISING SCREEN	1.11.00	
Choose CHOOSE ADVERTISING SCREEN	1.11.00.00	
4		
5 Select IMAGE, confirm with OK	1.11.00.00	
6 Insert USB or SD with image in the required directory structure		
7 Choose IMAGE	1.11.00.01	Uploading files. You can upload more images at a time.
Choose LOAD IMAGE FROM SD OR USB	1.11.00.01.00	
8		
9 Select file (png), confirm with OK	1.11.00.01.01	
10 File LOADED, confirm with OK	1.11.00.01.01	
11 Choose <arrow back>		go one step back
Choose IMAGE	1.11.00.01	Select file (png)
13 Choose CHOOSE IMAGE	1.11.00.01.00	
14 Select file, confirm with OK	1.11.00.01.00	
15 File LOADED, confirm with OK	1.11.00.01.00	
16 Close OPERATOR MENU with X		

Image will show after Screensaver dealy time. See [G](#)

### E CONFIGURING YOUR OWN MOVIE AS SCREENSAVER

You can show your own movie as a screensaver. Movie will be shown above IMAGE ( see [D](#) ) on top of screen

Desired action	Screen	Information
1 Go to OPERATOR MENU		
2 Choose SOUND & VISION	1.11	
3 Choose ADVERTISING SCREEN	1.11.00	
4 Choose CHOOSE ADVERTISING SCREEN	1.11.00.00	
5 Select VIDEO, confirm with OK	1.11.00.00	
6 Choose VIDEO	1.11.00.02	
7 Insert USB or SD with movie in the required directory structure		
8 Choose LOADING VIDEO FROM SD OR USB	1.11.00.02.02	Uploading files. You can upload more videos at a time.
9 Select file name Video (MP4), confirm with OK	1.11.00.02.02	
10 Files LOADED, confirm with OK	1.11.00.02.02	
11 Choose SELECT VIDEO	1.11.00.02.01	Select file (MPEG-4)
12 Select your video.mp4, confirm with OK	1.11.00.02.01	
13 File LOADED, confirm with OK	1.11.00.02.01	
14 Close OPERATOR MENU with X		

Video will show after Screensaver dealy time. See [G](#)

## F CONFIGURING YOUR OWN SLIDESHOW AS SCREENSAVER

You can show your own images in a SLIDESHOW

Desired action	Screen	Information
1 Go to OPERATOR MENU		Login with your code
2 Choose SOUND & VISION	1.11	
3 Choose ADVERTISING SCREEN	1.11.00	
	1.11.00.00	
4 Choose CHOOSE ADVERTISING SCREEN		
5 Select SLIDESHOW, confirm with OK	1.11.00.00	
6 Insert USB or SD with images in the required directory structure		
7 Choose SLIDESHOW	1.11.00.03	Uploading files. You can upload more images at a time.
8 Choose LOAD IMAGE FROM SD OR USB	1.11.00.03.04	
9 Choose CHOOSE IMAGES	1.11.00.03.03	
10 Select files for slideshow, confirm with OK	1.11.00.03.03	
11 Files LOADED, confirm with OK	1.11.00.03.03	Select file (png)
12 Choose CHOOSE IMAGES	1.11.00.03.04	
13 Select images for slide show, confirm with OK	1.11.00.03.03	
14 Files LOADED, confirm with OK	1.11.00.03.03	time of the effect between two images
15 Choose EFFECT DURATION TIME	1.11.00.03.00	
16 Set EFFECT DURATION TIME (sec.) and confirm with OK	1.11.00.03.00	
17 Choose DURATION TIME	1.11.00.03.01	Time the machine will show each image
18 Set DURATION TIM (Sec.), confirm with OK	1.11.00.03.01	
19 Choose SLIDESHOW EFFECT, confirm with OK	1.11.00.03.02	SLIDE or FADE IN
20 Close OPERATOR MENU with X		

SLIDE SHOW will show after screensaver delay time. See G

## G CONFIGURING YOUR IMAGE DURING THE BREWING PROCESS

You can show your own image during every brewing process

Desired action	Screen	Information
1 Go to OPERATOR MENU		Login with your code
2 Choose SOUND & VISION	1.11	
3 Choose ADVERTISING SCREEN (RECIPE PREPARATION)	1.11.09	
4 Choose CHOOSE ADVERTISING SCREEN		
	1.11.09.00	
5 Select IMAGE, confirm with OK	1.11.09.01	
6 Insert USB or SD with image in the required directory structure	1.11.09.01	
7 Choose IMAGE		Uploading files. You can upload more images at a time.
8 Choose LOAD IMAGE FROM SD OR USB		
9 Select file (png), confirm with OK	1.11.09.01.01	
10 File LOADED, confirm with OK	1.11.09.01.01	
11 Choose <arrow back>	1.11.09.01.00	go one step back
12 Choose IMAGE	1.11.09.01.00	Select file (png)
13 Choose CHOOSE IMAGE	1.11.09.01.00	
14 Select file, confirm with OK		
15 File LOADED, confirm with OK	1.11.09.01.00	
16 Close OPERATOR MENU with X		

Image will show during every brewing process.

## H CONFIGURING YOUR OWN MOVIE DURING BREWING PROCESS

You can show your own movie during every brewing process.

Desired action	Screen	Information
1 Go to OPERATOR MENU		
2 Choose SOUND & VISION	1.11	
3 Choose ADVERTISING SCREEN (RECIPE PREPARATION)	1.11.09	
4 Click CHOOSE ADVERTISING SCREEN	1.11.09.00	
5 Select VIDEO, confirm with OK	1.11.09.02	
6 Choose VIDEO	1.11.09.02	
7 Insert USB or SD with movie in the required directory structure		
8 Choose LOADING VIDEO FROM SD OR USB	1.11.09.02.01	Uploading files. You can upload more videos at a time.
9 Select file name Video (MP4), confirm with OK	1.11.09.02.01	
10 Files LOADED, confirm with OK	1.11.09.02.01	
11 Choose SELECT VIDEO	1.11.09.02.00	Select file (MPEG-4)
12 Select your video.mp4, confirm with OK		
13 File LOADED, confirm with OK	1.11.09.02.00	
14 Close OPERATOR MENU with X		

## I CONFIGURING YOUR SLIDESHOW DURING BREWING PROCESS

You can show your own images in a SLIDESHOW during every brewing process

Desired action	Screen	Information
1 Go to OPERATOR MENU		Login with your code
2 Choose SOUND & VISION	1.11	
3 Choose ADVERTISING SCREEN (RECIPE PREPARATION)	1.11.00	
4 Choose CHOOSE ADVERTISING SCREEN	1.11.00.00	
5 Select SLIDESHOW, confirm with OK	1.11.00.00	
6 Insert USB or SD with images in the required directory structure		
7 Choose SLIDESHOW	1.11.09.03	Uploading files. You can upload more images at a time.
8 Choose LOAD IMAGE FROM SD OR USB	1.11.09.03.04	
9 Choose CHOOSE IMAGES	1.11.09.03.04	
10 Select files for slideshow, confirm with OK	1.11.09.03.04	
11 Files LOADED, confirm with OK	1.11.09.03.04	Select file (png)
12 Choose CHOOSE IMAGES	1.11.09.03.03	
13 Select images for slide show, confirm with OK	1.11.09.03.03	
14 Files LOADED, confirm with OK	1.11.09.03.03	time of the effect between two images
15 Choose EFFECT DURATION TIME	1.11.09.03.00	
16 Set EFFECT DURATION TIME (sec.) and confirm with OK	1.11.09.03.00	
17 Choose DURATION TIME	1.11.09.03.00	Time the machine will show each image
18 Set DURATION TIM (Sec.), confirm with OK	1.11.09.03.01	
19 Choose SLIDESHOW EFFECT, confirm with OK	1.11.09.03.02	SLIDE or FADE IN
20 Close OPERATOR MENU with X		

## J SCREENSAVER DELAY TIME

Set time after media will appear.

Desired action	Screen	Information
1 Go to OPERATOR MENU		Login with your code
2 Choose SOUND & VISION	1.11	
3 Choose SCREENSAVER DELAY TIME	1.11.00.04	
4 Set SCREENSAVER DELAY TIME (Sec.), confirm with OK	1.11.00.04	Image will show after selected delay time
5 Close OPERATOR MENU with X		

## K TEXT AND TOUCH SYMBOL

Show or hide Tekst and Touch symbol



Desired action	Screen	Information
1 Go to OPERATOR MENU		Login with your code
2 Choose SOUND & VISION	1.11	
3 Choose ADVERTISING SCREEN	1.11.00	
4 Choose SHOW TEKST AND TOUCH SYMBOL	1.11.00.05	
5 Select SHOW TEKST/TOUCH SYMBOL	1.11.00.05.00/1.11.00.05.01	
6 Select YES or NO, and confirm with OK	1.11.00.05.xx	
7 Close OPERATOR MENU with X		

## L CONFIGURING YOUR OWN LOGO ON CUP

You can show your logo on every recipe button (cup)

Desired action	Screen	Information
1 Go to OPERATOR MENU		Login with your code
2 Choose SOUND & VISION	1.11	
3 Choose LOGO ON CUP	1.11.02	
4 Insert USB or SD with image in the required directory structure		
5 Choose LOAD LOGO FROM SD OR USB	1.11.02.02	Uploading files
6 Select file_name.png, confirm with OK	1.11.02.02	
7 Files LOADED, confirm with OK	1.11.02.02	
8 Choose SHOW LOGO ON CUP	1.11.02.00	
9 Select YES	1.11.02.00	
10 Choose CHOOSE LOGO	1.11.02.01	Select file (png)
11 Select file, confirm with OK	1.11.02.01	
12 File LOADED, confirm with OK	1.11.02.01	
13 Close OPERATOR MENU with X		