

ANIMO

OptiFresh NG 2.0 (Bean) Model 2016	OptiFresh Touch (Bean) Model 2017
--	---



Modifications

Updated July 2018



Available in English only

The purpose of this document

This document informs you about modifications and updates.

It starts with a **Software** overview, followed by **modifications and updates** starting with the latest and ends with the first modification.

For questions regarding this document please contact **Animo Technical Support**

Marcel Tempelman +31 592 376 359 mtempelman@animo.nl

Martin van der Laan +31 592 376 331 [mvanderlaan@animo.nl](mailto:mvanterlaan@animo.nl)

Iwan Spier +31 592 376 356 ispier@animo.nl

How to read the rating plate

Till 2016

1st line Machine name and type
2th line Art. No. / Serial Number*
3rd line Voltage / Frequency / Power

OptiFresh 3 NG 2.0
1004557 / 2Z x x x x x*
1N~220-240V 50-60Hz 2275W

* 2 Z x x x x x first two digits

→ year of production 2016 (V= 2012 / W=2013 / X= 2014 / Y=2015 / Z=2016)
→ 2th quarter production (april-june)

From 2017

1st line Machine name and type
2th line Art. No. / Serial Number*
3rd line Voltage / Frequency / Power

OptiFresh 3 Touch
1004906 / 1A A x x x x x*
1N~220-240V 50-60Hz 2275W

* 1A A x x x x x first Three digits

→ year of production (A= 2017 / B=2018 / C= 2019 / D=2020 / E=2021)
→ week of production (1A= week 1 / 1B=week 2 / 1C=week 3 -----1Z=week 26)
→ week of production (2A= week 27 / 2B=week 28 / 2C=week 29 -----2Z= week 52)

Software history

OptiFresh (Bean) NG 2.0 / Touch



The software can be downloaded from below link

NL: www.animo.eu/nl/sd

EN: www.animo.eu/en/sd

DE: www.animo.eu/de/sd

FR: www.animo.eu/fr/sd

Software	Date	Changes
V5.56.3067	Jan 2018	Latest available software version
V5.52.1853	Dec 2015	First software release

Mixer 247 holder clamp base quick fit black [1003568]

Part	Mixer 247 holder clamp base quick fit black
Solves problem	Extended lifespan axle seal
Modification	Material axle seal changed from Silicon (red) into Viton® (green)
From mach. no.	2BB20924 July 2018
Retrofit	Yes
Article number	1003568
Action	no



Old

New

Mixer 247 axle seal Ø4mm [1003572]

Part	Mixer 247 axle seal Ø4mm green
Solves problem	Extended lifespan
Modification	Material seal changed from Silicon (red) into Viton® (green)
From mach. no.	Spare part from warehouse is changed from mid July 2018
Retrofit	Yes
Article number	1003572
Action	no

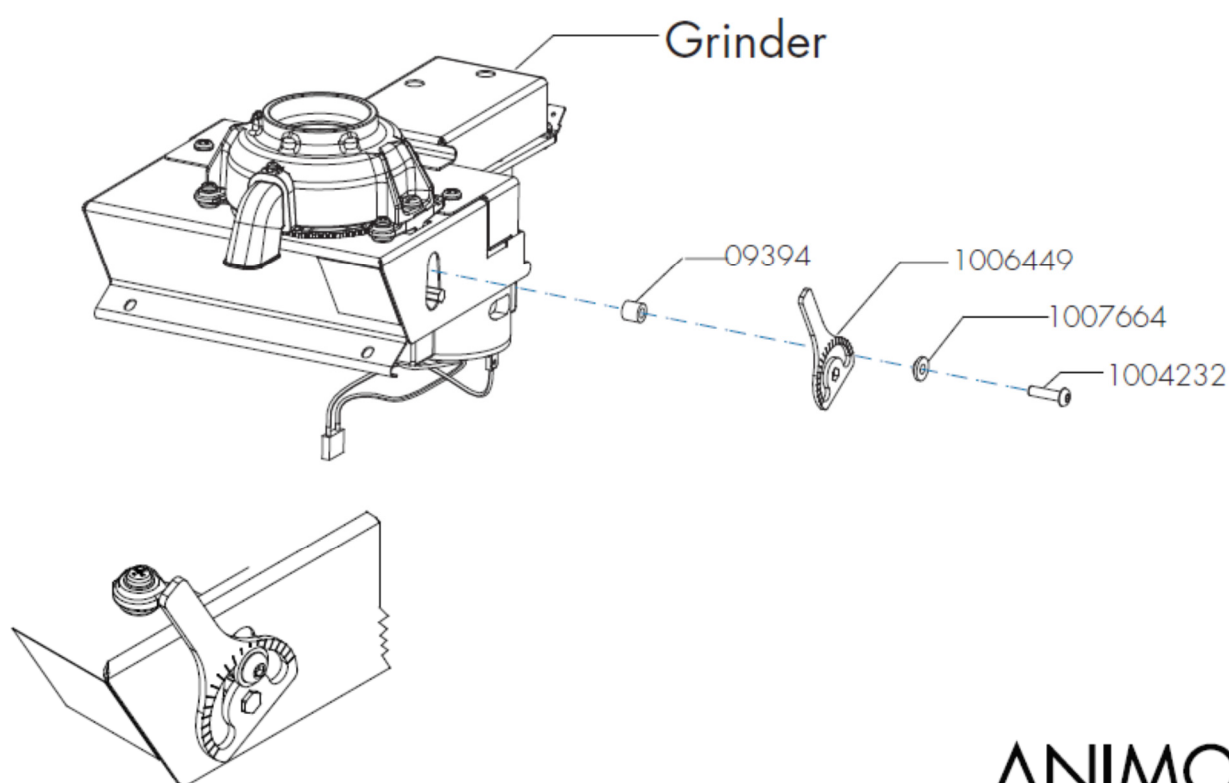


Old

New

Fixation kit grinder [1007665] (OptiFresh Bean only)

Part	Fixation kit grinder (optional)
Solves problem	To (extra) secure the grinder adjustment
Modification	-
From mach. no.	-
Retrofit	Yes
Article number	1007665 (kit)
Action	no



Coffee waste bin	
Part	Coffee waste bin & Tray
Solves problem	-
Modification	Heavy duty plastic (injection mold)
From mach. no.	Mach.no. 1XB17576 - Week 24/2018
Retrofit	New bin and tray fit in: OptiFresh NG (model 2012) OptiFresh NG 2.0 (model 2016) OptiFresh Touch (model 2017)
Article number	1006408 Coffee waste bin 1006409 Reception tray
Action	no

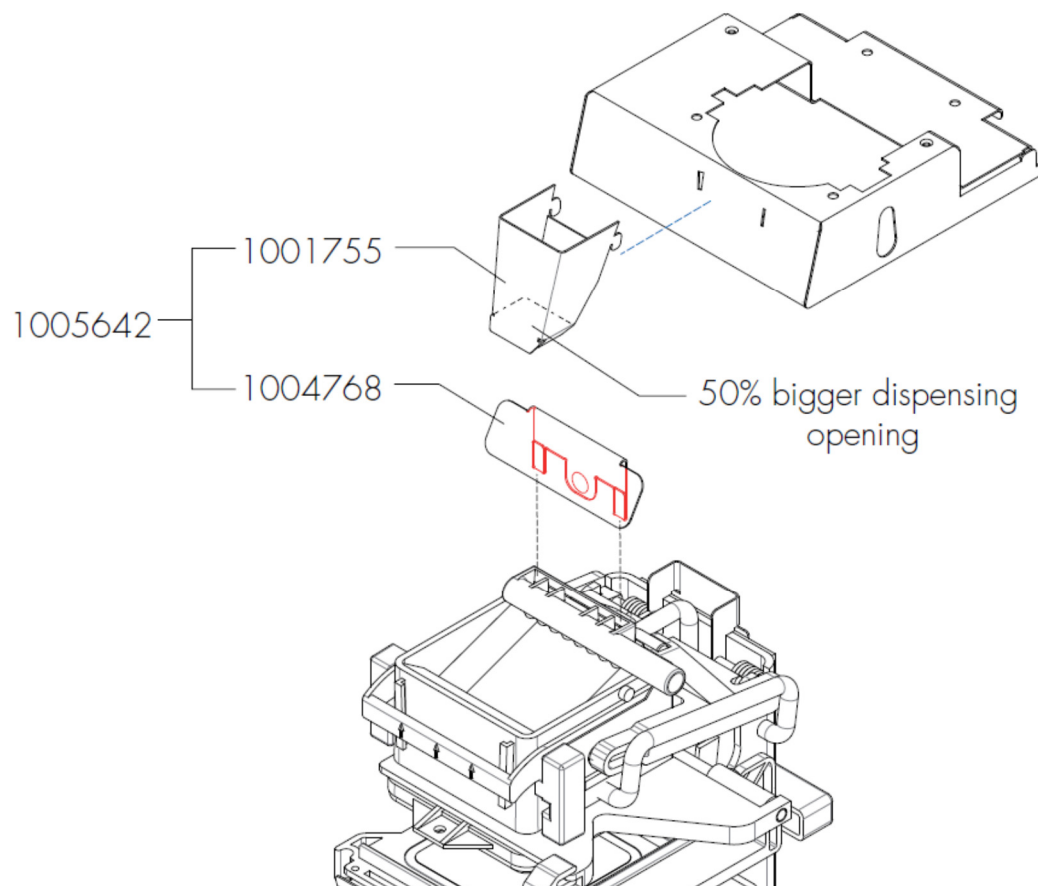


Old

New

Grinder OptiFresh Bean NG 2.0

Part	(new) Coffee guide & sprinkler cover
Solves problem	blocking of coffee guide by ground coffee accumulation of coffee grounds on top of sprinkler
Modification	new coffee guide with 50% bigger dispensing opening sprinkler cover for easy cleaning
From mach. no.	3Zxxxxx (production July 2016)
Article number	Set 1005642 = 1001755 + 1004768
Retrofit	yes
Action	no



Hot water coupling

Part	fixation clip
Solves problem	metal clip breaks
Modification	metal clip changed into plastic clip
From mach. no.	2Z 10879 the new fixation clip is standard in the machine
Article number	1004673
Retrofit	yes, change metal clip for new plastic clip
Action	Yes



Hot water coupling



New plastic fixation clip